

Domain Host d'Art Adobe Air Add-on Tool

Domain Host d'Art has added a new tool to help ease the day to day work on your Domain Host d'Art website.

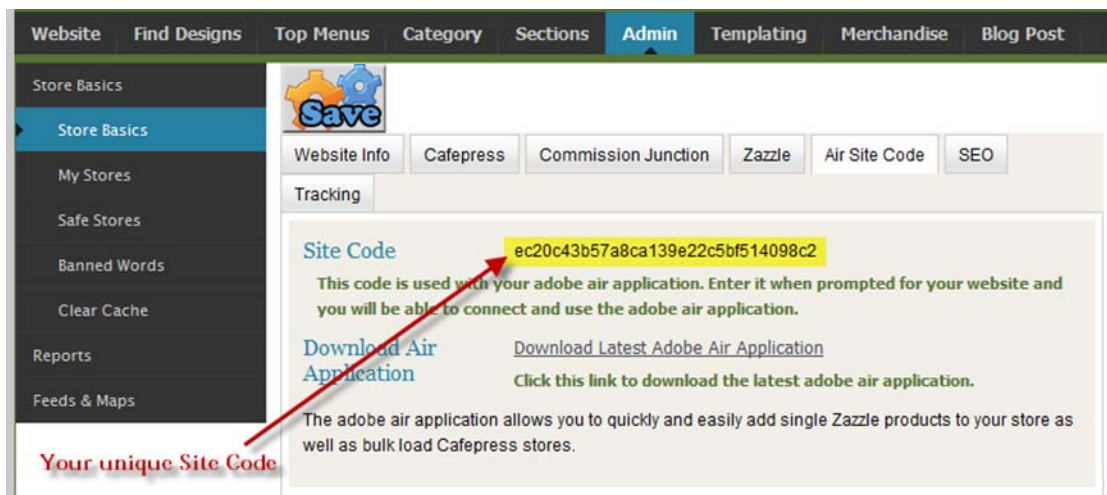
The tool is based upon the Adobe Air platform and gives you more functionality than you can normally get from just a standard website. The Adobe Air Add-on Tool currently supports the following functionality:

- Bulk Load Cafepress Shops into your domain
- Bulk Load Zazzle Galleries into your domain
- Add single Zazzle products quickly and easily.

This document outlines how to download and setup your Adobe Air Add-on Tool and introduces you to the features that are currently available.

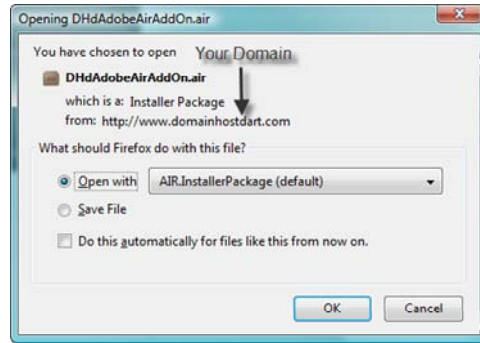
Download & Setup

You will find the Air Application available to you in the Admin section of your administration portal. Simply click on the Air Site Code tab (or scroll down to the Air Site Code section if you are in the HTML-Lite version of the Administration Portal) and click on the Download Latest Adobe Air Application.

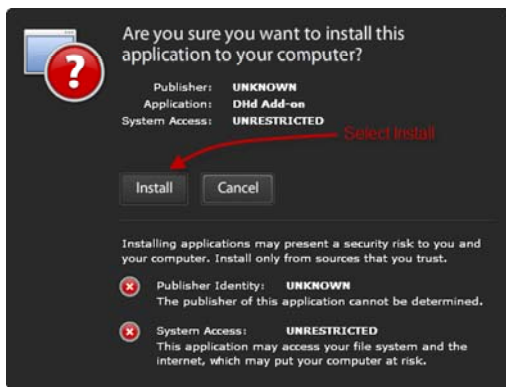


The screenshot displays the Admin section of the Domain Host d'Art administration portal. The top navigation bar includes tabs for Website, Find Designs, Top Menus, Category, Sections, Admin (selected), Templating, Merchandise, and Blog Post. The left sidebar lists various store management options such as Store Basics, My Stores, Safe Stores, Banned Words, Clear Cache, Reports, and Feeds & Maps. The main content area features a 'Save' button and several tabs: Website Info, Cafepress, Commission Junction, Zazzle, Air Site Code (selected), and SEO. Below these tabs, the 'Air Site Code' section is visible, showing a unique site code: `ec20c43b57a8ca139e22c5bf514098c2`. A red arrow points from the text 'Your unique Site Code' at the bottom left to this code. Below the code, there is a 'Download Air Application' link and a 'Download Latest Adobe Air Application' link. A note explains that this code is used for connecting to the Adobe Air application, and another note states that the application allows for quickly adding single Zazzle products and bulk loading Cafepress stores.

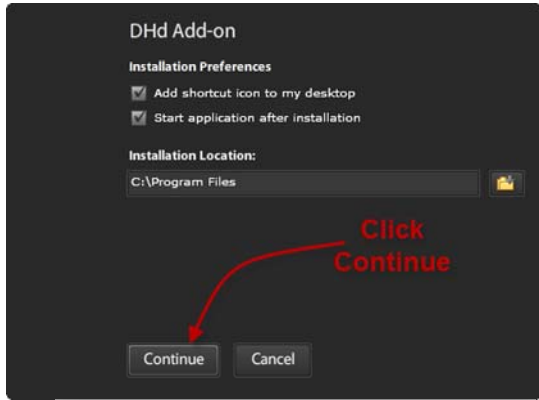
You will see this window pop up. Select Open With and **OK**. This assumes that you already have Adobe Air installed. If you do not, please visit <http://get.adobe.com/air/> and download and install the application first.



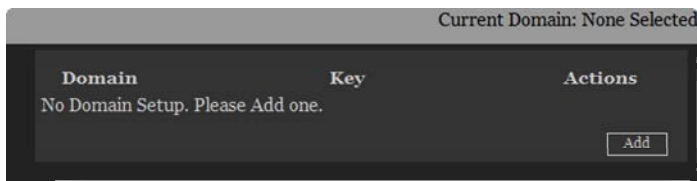
Next you will see the Install popup screen. Click **Install**.



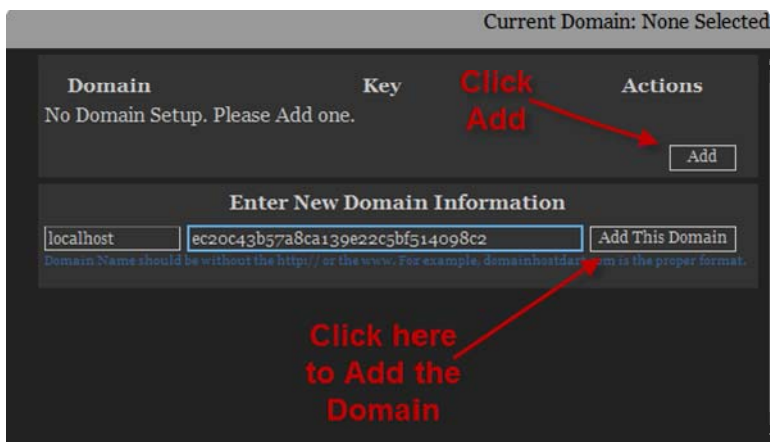
Click **Continue** when the next pop up window appears



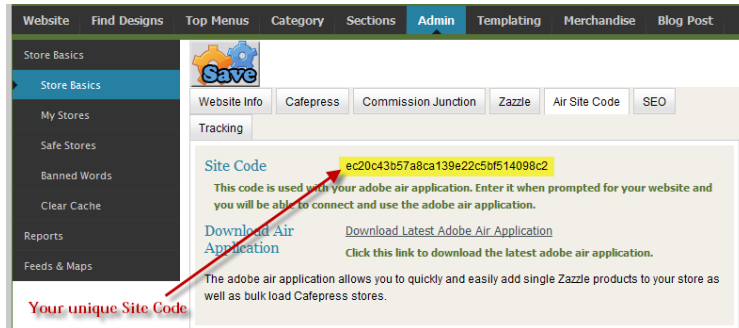
The application will now start and you should see this window pop up. It is because you've not yet setup any of your domains. You can setup all your domains through this one window. Click **Add** to add a new domain.



Once you've clicked add you should see a section title 'Enter New Domain Information' appear. Enter in your domain name in the first field. If you domain is www.DomainHostdArt.com then you would enter in domainhostdart.com. Do not enter in the http://, the www. or the trailing slash.

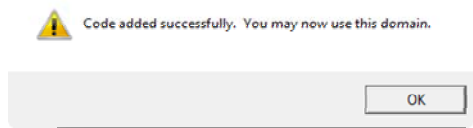


You then enter in the unique key for your domain. Your unique key is available in your Administration Portal on the Admin panel. Click on the Air Site Code to get the unique key. Copy the key from the website and paste it into the domain field.



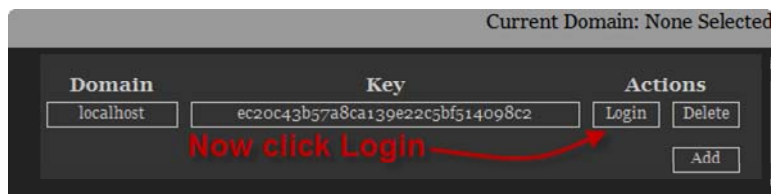
Then click on the **Add This Domain** action.

If everything was entered successfully you should see the following message.

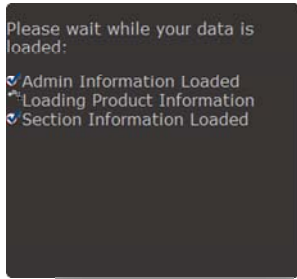


Your site is now setup with this computer. If you ever need to remove the site simply click on the delete key and the site will be deleted from the application.

Just one more step. You need to Login to the site. Once logged in the site will remain logged in until you either delete the site or login into another domain.



Click on the **Login** Action and you will see the basic information being retrieved from your website. It takes a few seconds to complete the download of all the information. This information will be retrieved every time you restart the application.



Close the Login window and you can now begin to work. You should ensure that the Active Domain is the domain you want. The little wrench is where you can gain access to the login screen if you wish to add another domain or switch between domains. You can only change the domain login from the start up panel.



You now have access to active features. An active feature will highlight with a white box when you hover over it.

Cafepress Shop Loader



The Shop Loader is very easy to use. Simply enter the Shop Id of a Cafepress shop. If the url of your shop is <http://www.cafepress.com/tshirtdart> then you would enter in tshirtdart.

Leave the Start Page field blank. I'll explain that in just a moment.

Finally, click **Import**. That's it. It will now run. I've tested it with shops up to 185,000 products. It'll take over 9 hours to load all of the products for that large of a shop.

You will see many start and stops as the process runs through the pages. Each page consists of a hundred products. So a shop with 185,000 products would have 1850 pages. The Start Page field is automatically updated as the job progresses.

Interruptions can occur and you don't want to lose hours of work. Sometimes the application loses access to the internet, Cafepress or your domain. If the application looks like it frozen in time for more than 15 minutes simply press the **Import** button again and the process will start up from the page in the Start Page field.

Conversely you can stop the process if you know a power outage is coming. Just remember the page number and start the process up again. I usually set the page number back by at least one. So if it's frozen on page 958, set the page count back to 957. No harm will come from setting the page back as the application is smart enough not to load duplicate products.

All of the products are loaded into a Top Menu called import. The import Top Menu is automatically hidden from the public. A Category with the shop id is also created to hold all of the sections. For example, if you imported tshirtdart I would have a Category of tshirtdart.

The last step is to move all the products into Categories of your making. The process dumps every single section into the shop category and you need to organize your shop a bit better. Create your new categories and then use the Bulk Category Sections function under the Section Panel in the administration portal. This will let you move all your sections into different categories on one screen.

Zazzle Shop Loader

Simply enter in the gallery id of the Zazzle Gallery and press import. For example, if the gallery is <http://www.zazzle.com/tshirtdart> then enter in tshirtdart.

All of the products are loaded into a Top Menu called import. The import Top Menu is automatically hidden from the public. A Category with the gallery id is also created to hold all of the sections. For example, if you imported tshirtdart I would have a Category of tshirtdart.

There are two stages to the Loader. The first will traverse all of the galleries product lines retrieving things like descriptions, titles, and the total number of products. Each Product Line will be created as a section.

The second stage of the loader will bring in all of the products from Zazzle and create the sections to hold them.

If the process is stopped, either because you've clicked on the stop processing button, or the power/internet/zazzle site has failed, then simply close the Zazzle Shop Loader window and re-open it. You will be asked if you wish to continue with your load. If you click Ok then the loader will pick up where it left off. If you select Cancel then the previous load will no longer be run. Any sections & products created will still remain in your domain.

The last step is to move all the products into Categories of your making. The process dumps every single section into the shop category and you need to organize your shop a bit better. Create your new categories and then use the Bulk Category Sections function under the Section Panel in the administration portal. This will let you move all your sections into different categories on one screen.

Zazzle Add Product



This allows you to quickly add single Zazzle products into a holding section, up to 25 products at a time. I've created a video of this functionality in use, which you can watch here:

<http://www.screencast.com/users/DomainHostdArt/folders/Default/media/b4fed270-e3de-4b23-a041-69f1483ee8a9>

The first step is to choose the right holding section (step 1). If you've not created any yet, go back to your domain and create at least one holding section. You will need to logout/login or shutdown/startup the application for the new holding section to be recognized.

Then you click & drag over product links, images, or a product number into the large white area (Step 2). You should see an image of the product show up if the link was a product. I've set the window to Always on Top so that you can quickly and easily surf Zazzle marketplace to find cool products to add while having the Add Product panel always available. You can turn off the Always on Top by clicking on the **Toggle On Top** button (it turns it on and off).

I would suggest no more than 25 products at a time. The testers found that 5 is a perfect number of products and that it allowed them to remain quick and nimble.

Once you are ready simply click on the **Create** button (step 3). You will see each product disappear as it is successfully added to your holding section. Then you can begin again. No need to close the window. Just keep on adding.

The clear button will remove the current products from being uploaded.

Watch the video and it should make everything clear.

What's Next

There is more functionality to come. Bulk Zazzle shop loading along with a single product cafepress load are next. If people really like this way of affiliating and controlling their own shops then I will begin to migrate the whole of the Administration portal into Adobe Air.

Please let me know what you'd like to see and whether you'd like to have more functionality.